

**FEATURES INCLUDE:**  
**4 Bedrooms and 4 Baths**  
**3200 Square Feet**

**Foyer:** Beautiful Large foyer

**Great room:** Built in bookcases, Heart pine floors, French doors Leading to private patio , fireplace with gas logs , recessed lighting and a ceiling fan.

**Formal Dining Room:** Open to foyer and on the front of the house Looking out at the lake.

**Kitchen:** Brick Paver floors and Granite counters, stainless steel Appliances, electric oven, microwave, dishwasher, disposal, ice maker, stainless side by side refrigerator, 5 burner gas cook top, Island with granite counter top and recessed lighting.



**Great Room**



**Dining Room**



**Kitchen**

**Breakfast Room:** Heart Pine floors

**Laundry:** Sink and Great storage

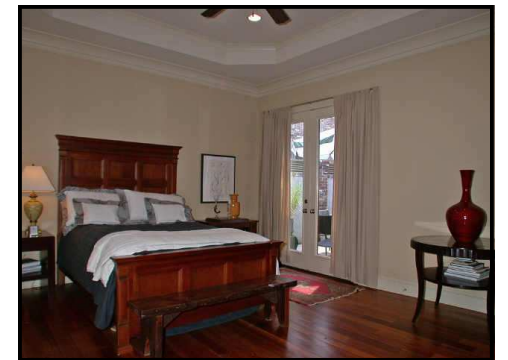
**Huge Master Bedroom:** Recessed lighting, tray ceiling, ceiling fan, French doors to the Private patio, Heart pine floors and large Walk-in closet.

**Master Bath:** Separate shower , whirlpool tub, water closet and double vanities

**Garage:** 2 car with power opener, storage and attic access



**Breakfast Room (could be second dining)**



**Master Bedroom**

# 600 Northlake

*Township*

*Ridgeland, MS 39157*

## EXTRAS

**Wrap around porches, up and down**

**Plantation Shutters**

**Heart Pine Floors**

**Great Room up and Down**

**(great floor plan for teenagers)**

**Each Bedroom has its own Bath**

**2 Bedrooms up and 2 down**



**Private Patio**

*For more pictures to view of this property,  
go to [www.litsingerrealty.com](http://www.litsingerrealty.com)*



## \$550,000

*Marketed by:*

# *Sandra Gilchrist*

*Realtor*

## *Litsinger Realty*

*601-856-2265 Office*

*601-953-5347 Cell*